

OHPO

NPS Form 10-900
(Rev. 8-86)

OMB No. 1024-0018

REFNUM 02001516

United States Department of the Interior
National Park Service

ENTERED DEC 12 2002

NATIONAL REGISTER OF HISTORIC PLACES
REGISTRATION FORM

=====

1. Name of Property

=====

historic name: **Warwick Interlocking Tower**

other name/site number: **Ohio Historic Inventory SUM #3098-19 (Pennsylvania Interlocking Tower.**

=====

2. Location

=====

street & number: **2955 South 1st Street**

not for publication: **N/A**

city/town: **Clinton**

vicinity: **N/A**

state: OH county: **Summit**

code: **153**

zip code: **44216**

=====

3. State/Federal Agency Certification

=====

As the designated authority under the National Historic Preservation Act of 1966, as amended, I hereby certify that this x nomination request for determination of eligibility meets the documentation standards for registering properties in the National Register of Historic Places and meets the procedural and professional requirements set forth in 36 CFR Part 60. In my opinion, the property x meets does not meet the National Register Criteria. See continuation sheet.

Barbara Power Dept. Head Planning, Inventory & Registration October 21, 2002
Signature of certifying official Date

Ohio Historic Preservation Office -- OH SHPO

State or Federal agency and bureau

In my opinion, the property meets does not meet the National Register criteria. See continuation sheet.

Signature of commenting or other official

Date

State or Federal agency and bureau

4. National Park Service Certification

I, hereby certify that this property is:

- entered in the National Register
- See continuation sheet.
- determined eligible for the National Register
- See continuation sheet.
- determined not eligible for the National Register
- removed from the National Register
- other (explain):

Signature of Keeper

Date of Action

5. Classification

Ownership of Property: Private

Category of Property: Building(s)

Number of Resources within Property:

Contributing	Noncontributing	
<u>1</u>	_____	buildings
_____	_____	sites
_____	_____	structures
_____	_____	objects
<u>1</u>	_____	Total

Number of contributing resources previously listed in the National Register: 0

Name of related multiple property listing: Canal Railroad, and Industrial Resources of the Clinton/Warwick Multiple Property Documentation form.

=====
6. Function or Use
=====

Historic: **Transportation** Sub: **Interlocking tower**

Current : **Vacant/Not in use** Sub: _____

=====
7. Description
=====

Architectural Classification: **Other: Interlocking Tower**

Other Description: **Vernacular**

Materials: foundation **Brick** roof: **Asphalt**
walls **Steel Brick** other: _____

Describe present and historic physical appearance. X See continuation sheet.

=====
8. Statement of Significance
=====

Certifying official has considered the significance of this property in relation to other properties: LOCAL .

Applicable National Register **Criteria: A**

Criteria Considerations (Exceptions) : N/A

Areas of Significance: **Transportation**

Period(s) of Significance: **1930**

Verbal Boundary Description: X See continuation sheet.

Boundary Justification: See continuation sheet. The boundary for the Warwick Interlocking Tower includes the property historically associated with structure.

=====
11. Form Prepared By
=====

Name/Title: Sam Tamburro, Historian for the Village of Clinton

Organization: NPS/ Cuyahoga Valley NP Date:17 January 2002

Street & Number: 15610 Vaughn Road Telephone: (330) 657-2096

City or Town: Brecksville State: OH ZIP:44141

=====
Additional Documentation
=====

Continuation Sheets

Maps

A USGS map indicating the property's location.

Figure 1 Site and photo map.

Figure 2 Warwick Interlocking Tower circa 1900.

Figure 3 Warwick Interlocking Tower 1909.

Figure 4 Warwick Interlocking Tower 1953.

Figure 5 Boundary Map.

Figure 6 Main Floor Plan

Photographs

United States Department of the Interior
National Park Service

NATIONAL REGISTER OF HISTORIC PLACES
CONTINUATION SHEET

Section number 7

Page 1

Warwick Interlocking Tower
Village of Clinton
Summit County, Ohio

Description

The Warwick Interlocking Tower is located at 2955 South 1st Street in Warwick's business district (photo 1, figure 1). The structure is situated on the south side of the CSX railroad tracks on a large concrete slab foundation. The building is approximately 120' south of the railroad tracks. Another set of railroad tracks is located 100' to the west of the interlocking tower. The three-story Schmitt Commercial Block building is located to the northeast of the tower, on the north side of the railroad tracks (photo 2). Historically, a set of railroad tracks ran closer to the tower's north elevation (photo 3).

The Warwick Interlocking Tower (14'x 22') is a two-story, gable-roof,¹ wire-cut brick, railroad switching tower (photo 1 and 4). The brick is running bond bisected by a belt-course above the window openings in each story. The building also has a belt-course water table. The interlocking tower was built circa 1930.²

The north elevation of the tower (facing the tracks) has several large windows in both stories of the façade (photo 1). The first story's windows are constructed of security glass-block (photo 5) and the second story's windows are one-over-one, double-hung, sash windows. The first story contains two bays and the second story has five bays that comprise the entire elevation.

¹ The gable roof was added sometime during the 1970s.

² The circa 1930 construction date is based on oral histories, interviews with the Pennsylvania Railroad Historical Society, and the tower's construction materials. Wire cut brick, a parapet roof, and glass block windows all suggest a construction date prior around 1930.

United States Department of the Interior
National Park Service

NATIONAL REGISTER OF HISTORIC PLACES
CONTINUATION SHEET

Section number 7

Page 2

Warwick Interlocking Tower
Village of Clinton
Summit County, Ohio

Description

The windows, which wraparound portions of the east and west elevations, provide for viewing of incoming and out going trains

(photos 6 and 7). Both the first and second story windows have soldier course brick lintels and header brick sills (photo 8).

The interlocking tower also contains a metal staircase on the south elevation of the building (photo 9). The staircase leads to a door on the second floor. A brick chimney stack is located in the southeast corner of the building.

In the first story, doors are located along the west and south sides of the building (photos 10-12). The floors are constructed of poured concrete supported by steel beams and the tower has a basement with an exterior entrance located along the west elevation (photo 13).

The interior of the tower is evocative of its function as a "control center" for railroad traffic entering into the Warwick Junction. The first floor of the building has concrete block walls and the ceiling contains exposed steel support beams. The space is currently being used to store CSX railroad crossing hardware. The second floor is used as office space for CSX and the walls and ceiling are finished with plaster.

United States Department of the Interior
National Park Service

NATIONAL REGISTER OF HISTORIC PLACES
CONTINUATION SHEET

Section number 7

Page 3

Warwick Interlocking Tower
Village of Clinton
Summit County, Ohio

Photographs

The following information is the same for all photographs.

Name of Property: Warwick Interlocking Tower.
County and State: Summit County, Ohio
Photographer: Sam Tamburro
Date of Photograph: November, 1999 ³
Location of Negatives: Cuyahoga Valley National Park

1. Interlocking Tower, façade, facing south.
2. Schmitt Commercial Block, south and west elevations, facing Northeast.
3. Former railroad track grade, facing east.
4. Interlocking Tower, wire-cut brick.
5. Interlocking Tower façade elevation, facing south.
6. Area east of the Interlocking Tower, facing east.
7. Area west of the Interlocking Tower, facing west.
8. Interlocking Tower, east windows, facing west.
9. Interlocking Tower, northeast corner, facing southwest.
10. Interlocking Tower, northeast corner, facing southwest.
11. Interlocking Tower, south elevation, facing north.
12. Interlocking Tower west elevation, facing east.
13. Interlocking Tower door, (west elevation), facing east.

³ A recent visit (February 2002) to the property verifies that it looks as it did when these photos were taken.

United States Department of the Interior
National Park Service

NATIONAL REGISTER OF HISTORIC PLACES
CONTINUATION SHEET

Section number 8

Page 4

Warwick Interlocking Tower
Village of Clinton
Summit County, Ohio

Statement of Significance

The Warwick Interlocking Tower is eligible under Criterion A: Transportation Canal, Railroad, and Industrial Resources of Clinton/Warwick Multiple Property Documentation Form (Clinton MPD).

The Warwick Interlocking Tower is significant under Criterion A for its association with the crossing point of TWO railroad lines that were instrumental in rail shipments across Ohio. The Baltimore & Ohio Railroad and the Pennsylvania Railroad converged at the Warwick Junction and the interlocking tower directed traffic at the intersection. In addition, the Warwick Interlocking Tower is a rare railroad resource that is evocative of Warwick's heritage as a railroad hamlet. The interlocking tower is the last existing building that is directly related to the railroad heritage of the community. The Cleveland, Lorain & Wheeling (a corporate subsidiary of the B&O) and the Pittsburgh, Ft. Wayne & Chicago (a subsidiary of the PRR) also used these lines.

Historical Background

The nominated property is located in the center of Warwick, Ohio (Summit County, Franklin Township, Section 31). The parcel of land was owned by various individuals during the first half of the nineteenth century. By 1852, when the Cleveland, Zanesville, & Cincinnati Railroad (CZ&C Railroad) was constructed through the area, Abraham Durstine owned the 277 acres of Section 31.⁴ CZ&C Railroad owned four of the acres, but it is unknown if any railroad buildings were located on their property.⁵

⁴ 1852 Summit County Auditor's Red Book.

⁵ Akron Beacon Journal, 26 January 1860; 1852 Summit County Auditor's Red Book.

United States Department of the Interior
National Park Service

NATIONAL REGISTER OF HISTORIC PLACES
CONTINUATION SHEET

Section number 8

Page 5

Warwick Interlocking Tower
Village of Clinton
Summit County, Ohio

Historical Background (continued)

By 1872, John G. Warwick purchased the property surrounding the CZ&C's parcel and from this period the area was known collectively as "Warwick." In 1869, the CZ&C was reorganized as the Cleveland, Mt Vernon, & Delaware Railroad (CMV&D).⁶ The 1874 Summit County Atlas notes the existence of an additional railroad line, the Lake Shore & Tuscarawas Valley, crossing the CMV&D Railroad. The 1874 Summit County Atlas also indicates that the railroad maintained a depot at Warwick.⁷ The Warwick area was in close proximity to the rich coal fields of Rogues Hollow and tons of coal were transported on the CMV&D Railroad.

The 1891 Summit County Atlas provides additional information on the site. By 1891, Warwick became a major crossing junction for four railroad lines: Baltimore & Ohio Railroad, Cleveland, Akron, & Columbus Railroad, Cleveland, Lakeshore, & Wheeling Railroad, and Pittsburgh, Ft. Wayne, & Western Railroad.⁸ The 1891 map only indicates the existence of a depot, although the railroad area contained several other buildings including an interlocking tower. The Warwick Interlocking Tower controlled and directed railroad traffic between several different lines.

Several historic photographs exist from the late nineteenth and early twentieth century that demonstrate the extent of the rail yard in relationship to an interlocking tower (see figures 2 & 3). Early photographic documentation indicates that the first

⁶ David D. Van Tassel and John J. Grabowski, The Encyclopedia of Cleveland History, (Bloomington, IN: Indiana University Press, 1996), 781-83.

⁷ Combination Atlas Map of Summit County, Ohio, (Philadelphia, PA: Tackabury, Mead, & Moffett, 1874), 123.

⁸ Illustrated Summit County, Ohio, 1891, (Akron, OH: Akron Map and Atlas Co., 1891), 84.

United States Department of the Interior
National Park Service

NATIONAL REGISTER OF HISTORIC PLACES
CONTINUATION SHEET

Section number 8

Page 6

Warwick Interlocking Tower
Village of Clinton
Summit County, Ohio

Historical Background (continued)

tower was constructed of wood and had a similar profile to the extant brick structure (figure 2). The picture also illustrates that a depot or freight house was situated directly to the south of the interlocking tower.

In 1899, The Pennsylvania Railroad purchased Pittsburgh, Ft. Wayne, & Western Railroad and operated the line for the next 50 years. By the early twentieth century the Warwick Junction remained a critical junction from several major railroad lines. The only specific records that exist for the Warwick Station area are the Interstate Commerce Commission's (ICC) Valuation Records. According to the ICC's Valuations Records for Warwick, the wooden interlocking tower was rebuilt in 1907 (figure 3). The ICC records also indicate that the Warwick Station proved to be a large complex that contained a depot, a freight house, a water tower, a privy, coal bins, and other associated structures.⁹ The Warwick Station also maintained a large coal and water station (built in 1911) to service rail cars and the area contained a rail yard that held approximately 245 cars.¹⁰

From Akron, Ohio to Warwick, Ohio the B&O Mainline track was operated under a joint trackage arrangement with the Pennsylvania Railroad.¹¹ Warwick proved to be an important junction where the Pennsylvania Railroad separated from the B&O Railroad right-of-way and turned southeasterly heading toward

⁹ Interstate Commerce Commission, Valuation Records, Section 20, Ohio, Warwick, 4 pages.

¹⁰ "Cleveland-Akron Issue," The Sentinel, (Published by the Baltimore & Ohio Railroad Historical Society), Winter/Spring, 1997, 37.

¹¹ "Cleveland-Akron Issue," 35.

United States Department of the Interior
National Park Service

NATIONAL REGISTER OF HISTORIC PLACES
CONTINUATION SHEET

Section number 8

Page 7

Warwick Interlocking Tower
Village of Clinton
Summit County, Ohio

Historical Background (continued)

Canal Fulton, Ohio and Massillon, Ohio.¹² The Pennsylvania Railroad operated the Warwick Interlocking Tower, controlling the PRR intersection of the B&O Railroad and Wheeling Division of the Cleveland, Lakeshore & Wheeling Railroad, a line that carried primarily ore and coal to Cleveland. Several industrial operations were located in the area, such as the Warwick Glass Factory, Warwick Furnace Company, the Oliver Sand Quarry, and the Franklin Industrial Quarry. In addition, all of the businesses had siding railroad tracks that connected to the mainline tracks.

From the turn of the century until the end of World War II, the Warwick Station remained a vital part of the PRR and the B&O Railroad systems. At the height of its operation, the Warwick Station serviced over 100 trains a day.¹³ The Pennsylvania Railroad continued to operate the Warwick Interlocking Tower throughout the twentieth century. In 1930, the PRR replaced the wood interlocking tower with the extant brick structure. A 1953 photograph of the Warwick Interlocking Tower indicates that the structure originally had a flat roof (figure 4). After that point, a gable roof extension (addition) was added to the tower.

After World War II, the Pennsylvania Railroad and the B&O Railroad slowly phased out their operations in the Warwick area. As the Clinton MPD states, government regulation, long-term technological changes, and increased competition created adjustments in the railroad industry that adversely affected the economy of Clinton/Warwick.

¹² "Cleveland-Akron Issue," 35.

¹³ Mary Knopf, "...And That's How the Tipple Topples." Akron Beacon Journal, 23 May 1961.

United States Department of the Interior
National Park Service

NATIONAL REGISTER OF HISTORIC PLACES
CONTINUATION SHEET

Section number 8

Page 8

Warwick Interlocking Tower
Village of Clinton
Summit County, Ohio

Historical Background (continued)

Technological improvements within the railroad industry also had a negative impact on Warwick. After World War II, most major railroad companies converted to Diesel engines as a more efficient power source than steam. Diesels did not need the vast amounts of water steam locomotives required and, consequently, frequent "watering" stops, like Warwick, were eliminated from the run. In addition, the steam engines' frequent stops for coal loads ended, which further isolated Warwick.

Subsequently, most of the railroad traffic control was shifted to centralized automated computer systems, phasing out the need for the interlocking tower.

By the late 1960s, most of the structures associated with the Warwick Station had been razed and nearly all of the siding tracks were removed. Currently, CSX owns and operates the railroad track through Warwick, including the interlocking tower, which functions as an office. The Warwick Interlocking Tower is the last remaining structure directly associated with Warwick's railroad era.

Criterion A: Transportation

The Warwick Interlocking Tower is significant under Criterion A for its association with the crossing point of several important railroad lines, such as the Pennsylvania Railroad and the B&O Railroad, that were instrumental in rail shipments across Ohio. The Baltimore & Ohio Railroad and the Pennsylvania Railroad converged at the Warwick Junction and the interlocking tower directed traffic at the intersection.

United States Department of the Interior
National Park Service

NATIONAL REGISTER OF HISTORIC PLACES
CONTINUATION SHEET

Section number 8

Page 9

Warwick Interlocking Tower
Village of Clinton
Summit County, Ohio

Criterion A: Transportation (continued)

From the late nineteenth century to the first half of the twentieth century, the Warwick Station served as an important junction point and this transportation provided for economic development in the area. Because of its access to national railroad lines, Warwick developed into a major supplier of coal, stone, and sand products for Northeast Ohio's heavy industries. A 1901 newspaper describes Warwick's transportation potential in the following manner:

This booming town [Warwick] is located in the southwest corner of Summit County, at the junction of the B&O, CA&C, CL&W, PFW&C, and the P&W Railroads. . . . the shipping facilities of Warwick are excelled by no city in the state and equaled by few. Then we have coal all about us, giving us cheap fuel, and these are the two absolute necessities for a large manufacturing city; good shipping facilities and cheap fuel.¹⁴

Railroad transportation provided for industrial development in Warwick and the Warwick family founded a glass factory and a furnace manufacturing company centered around the railroad. The Warwick area was also home to the Oliver Sand Quarry and the Franklin Industrial Quarry, as well as the coal mines at Rogues Hollow. All of these businesses were dependent on railroad service to ship their products to industrial centers such as Akron, Youngstown, and Cleveland. During the late-nineteenth and early-twentieth centuries, Warwick was a railroad hamlet and the

¹⁴ Akron Beacon Journal, 1 November 1901.

United States Department of the Interior
National Park Service

NATIONAL REGISTER OF HISTORIC PLACES
CONTINUATION SHEET

Section number 8

Page 10

Warwick Interlocking Tower
Village of Clinton
Summit County, Ohio

Criterion A: Transportation (continued)

interlocking tower is the last existing building that is directly related to the railroad heritage of the community.

Historic Integrity

The Warwick Interlocking Tower has a high degree of historic integrity. The nominated property maintains its integrity of location, setting, feeling, design, materials, workmanship, and association. The basic features of the building are intact, enabling the resources to communicate their historic functions.

The building is in its original location and the spatial relationship between the structure and the railroad tracks is still evident, which contributes to its integrity of setting and feeling, and association as a support building for the railroad industry. The Warwick Interlocking Tower's fenestration and massing are intact, and the building's design is evocative of its function.

United States Department of the Interior
National Park Service

NATIONAL REGISTER OF HISTORIC PLACES
CONTINUATION SHEET

Section number 9

Page 11

Warwick Interlocking Tower
Village of Clinton
Summit County, Ohio

Major Bibliographic References

Akron Beacon Journal, 1860, 1901.

"Cleveland-Akron Issue," The Sentinel. Published by the
Baltimore & Ohio Railroad Historical Society.
Winter/Spring, 1997.

Combination Atlas Map of Summit County, Ohio. Philadelphia, PA:
Tackabury, Mead, & Moffett, 1874.

Illustrated Summit County, Ohio, 1891, (Akron, OH: Akron Map and
Atlas Co., 1891), 84.

Interstate Commerce Commission. Valuation Records. Section 20,
Ohio, Warwick. 4 pages.

Knopf, Mary. "...And That's How the Tipple Topples." Akron
Beacon Journal, 23 May 1961.

Summit County Auditor's Red Book, 1852

Van Tassel, David D. and John J. Grabowski. The Encyclopedia of
Cleveland History. Bloomington, IN: Indiana University
Press, 1996.

Robert Wiebe, The Search for Order. New York: Hill and Wang,
1967.

United States Department of the Interior
National Park Service

NATIONAL REGISTER OF HISTORIC PLACES
CONTINUATION SHEET

Section number 10

Page 12

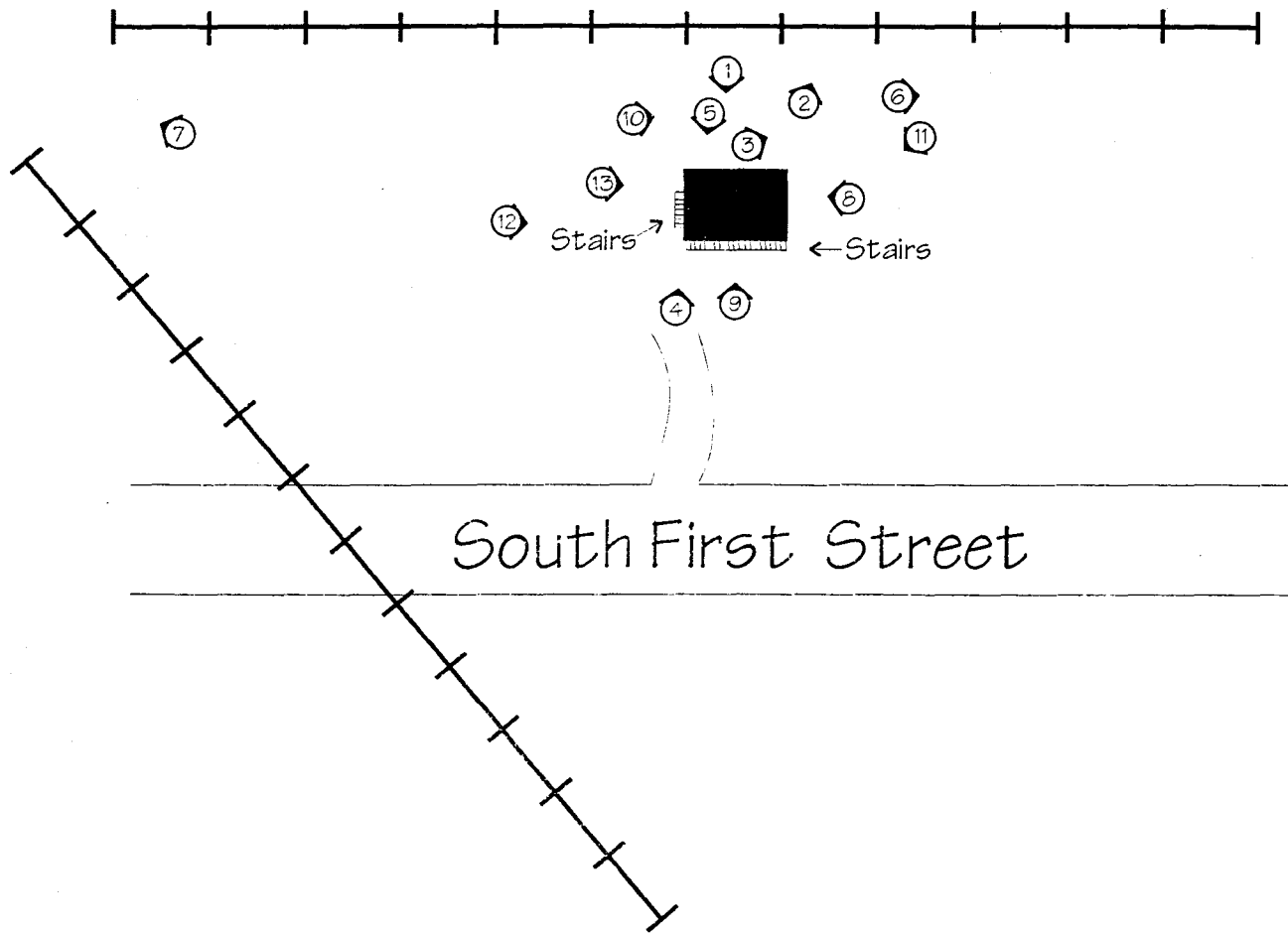
Warwick Interlocking Tower
Village of Clinton
Summit County, Ohio

Verbal Boundary Description

Beginning at Point 1 on the sketch map, proceed east a distance of 35 feet to Point 2; thence proceed south a distance of 35 feet to Point 3; thence proceed a distance of 35 feet to Point 4; thence proceed a distance of 35 feet back to the point of origin (figure 5).

North Division Street

Schmitt Commerical Block



South First Street

■ Contributing

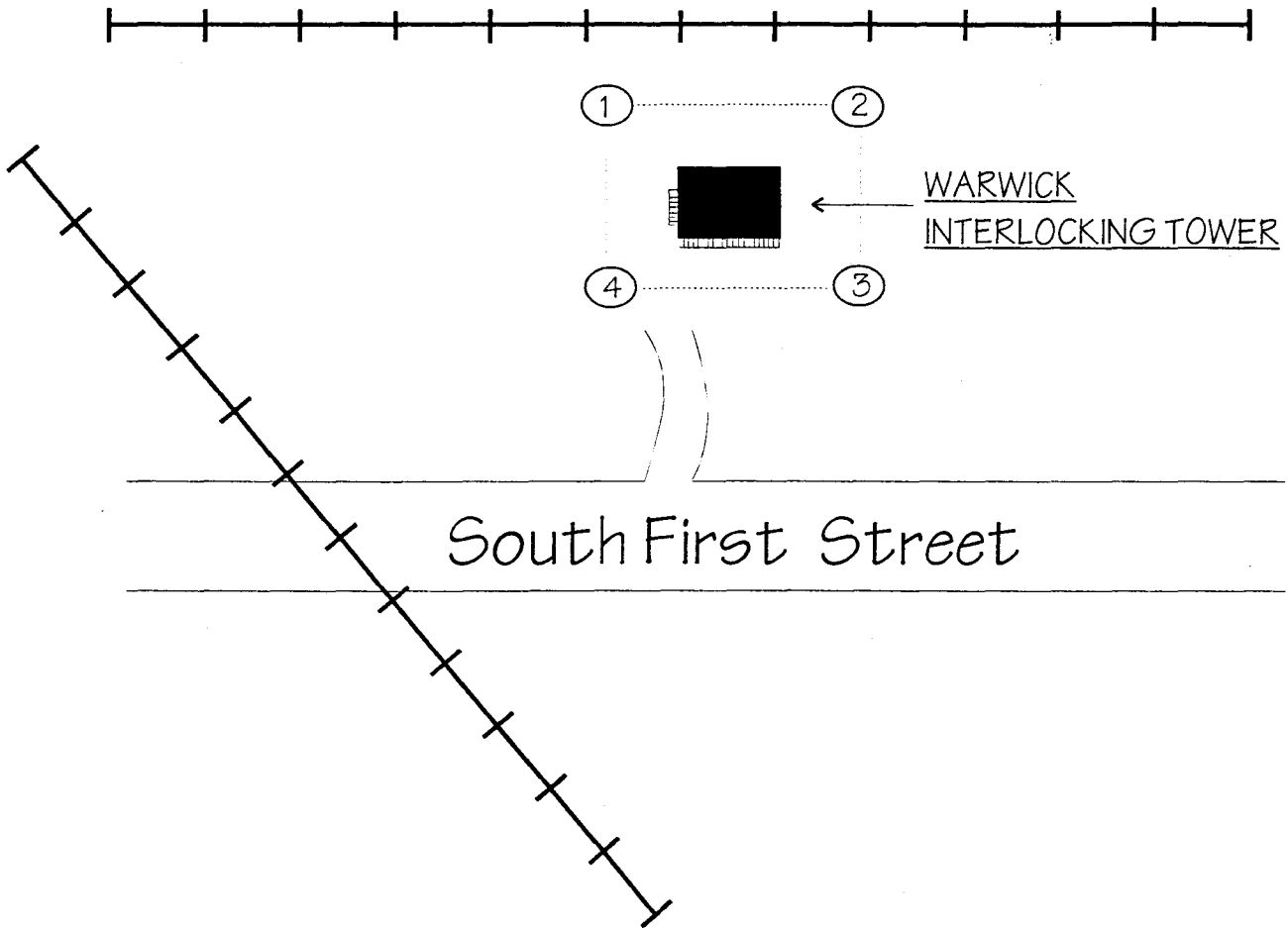
○ Photo view


NORTH
NOT TO SCALE

FIGURE ONE
SITE & PHOTO MAP
WARWICK INTERLOCKING TOWER
SUMMIT COUNTY, OHIO
CLINTON VICINITY
JAN. 2002

North Division Street

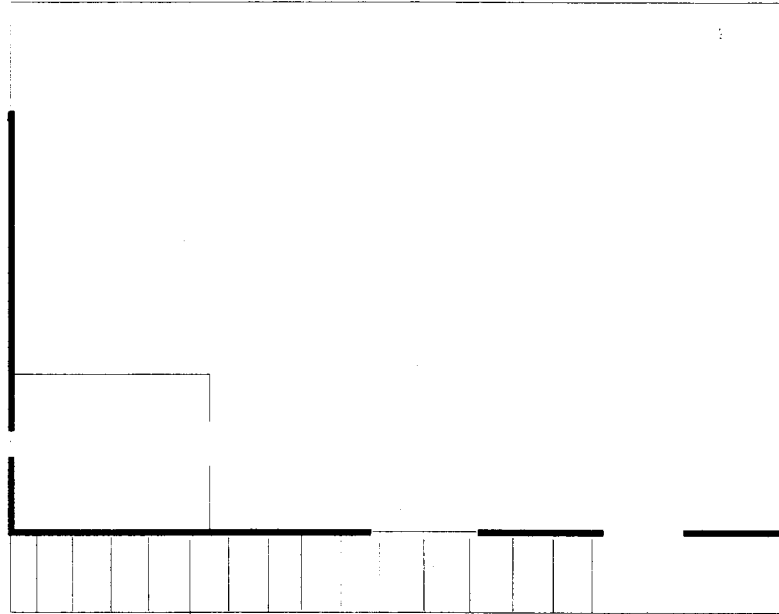
Schmitt Commerical Block



■ Contributing

FIGURE FIVE
BOUNDARY MAP
WARWICK INTERLOCKING TOWER
SUMMIT COUNTY, OHIO
CLINTON VICINITY
JAN. 2002

NORTH
NOT TO SCALE




NORTH
NOT TO SCALE

FIGURE SIX
MAIN FLOOR PLAN
WARWICK INTERLOCKING TOWER
SUMMIT COUNTY, OHIO
CLINTON VICINITY
JAN. 2002

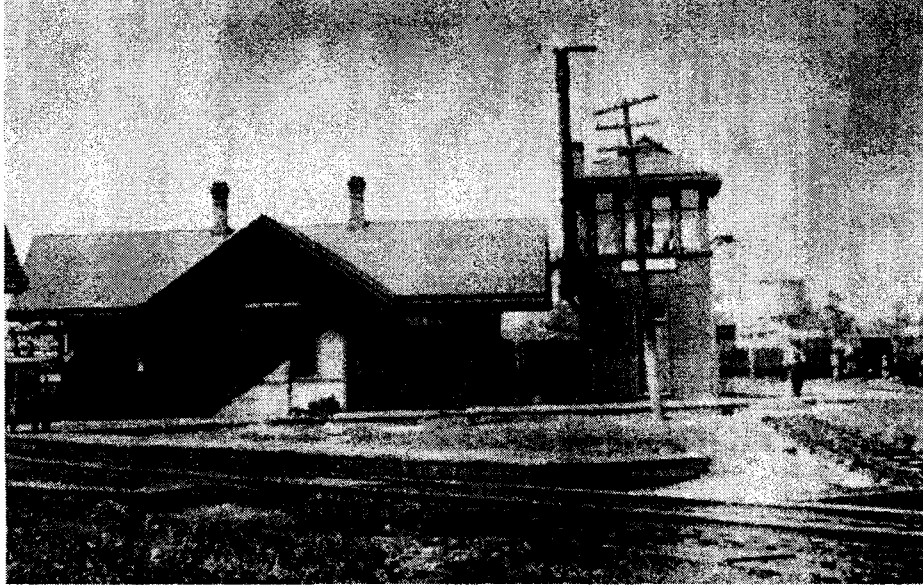


Figure Two
Warwick Interlocking Tower circa 1900
Summit County, Ohio
Clinton Vicinity

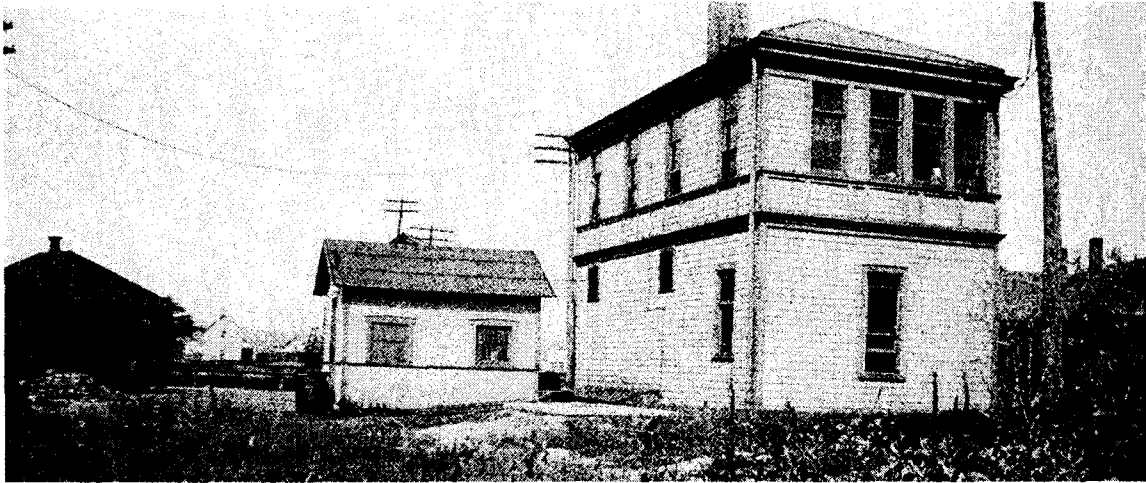


Figure Three
Warwick Interlocking Tower circa 1909
Summit County, Ohio
Clinton Vicinity

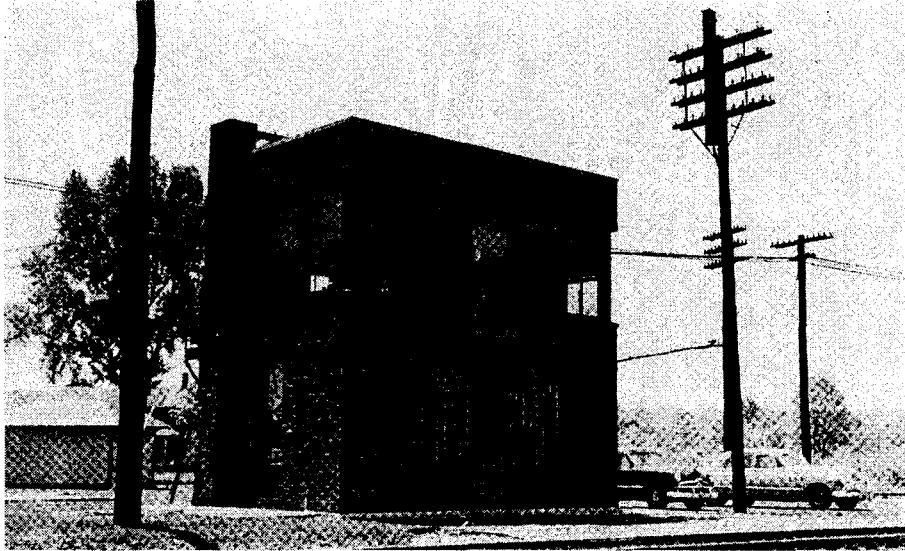
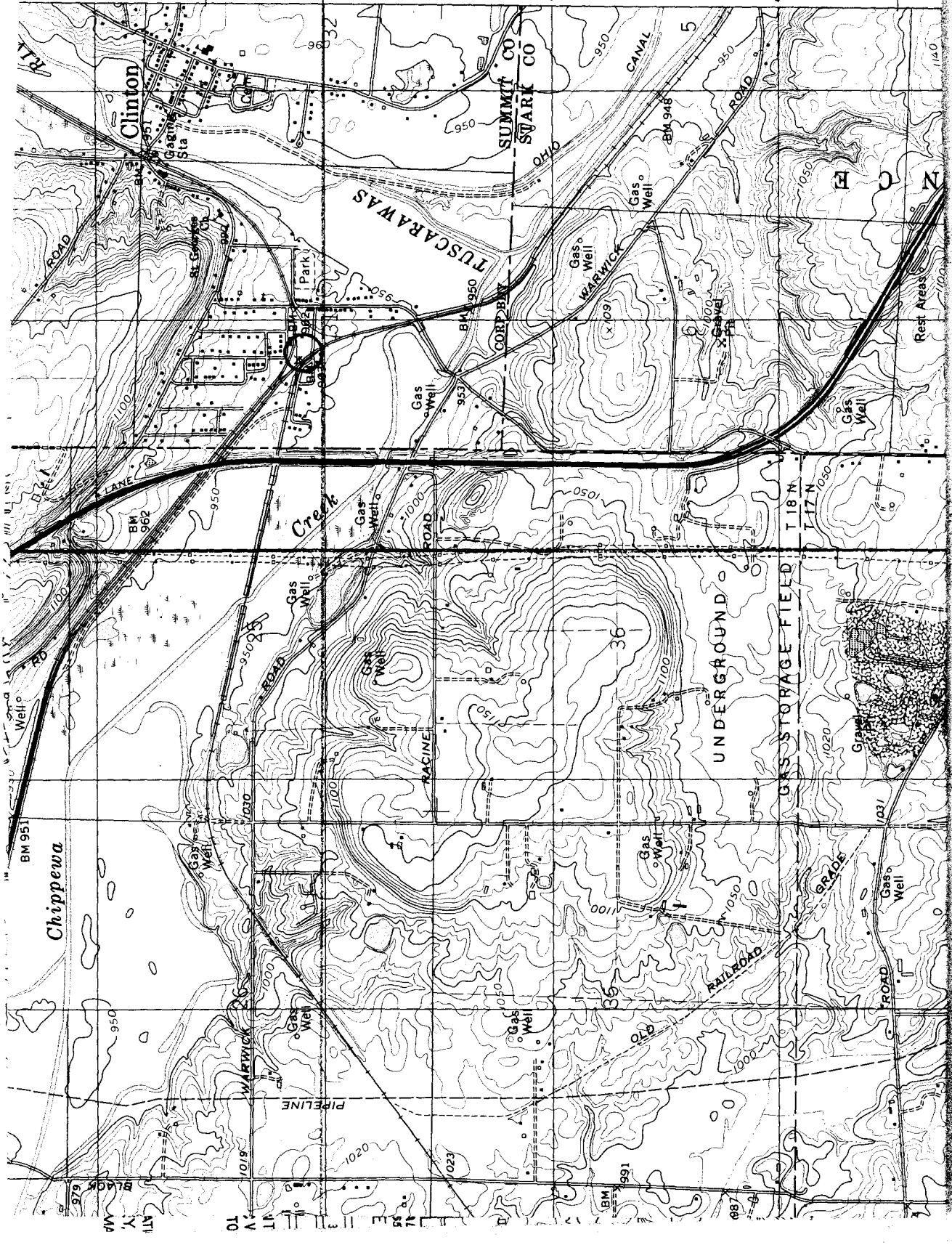


Figure Four
Warwick Interlocking Tower 1953
Summit County, Ohio
Clinton Vicinity

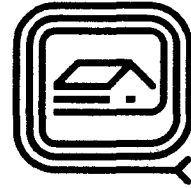
WAWWICK
Interlocking Tower
Z E N
17 445880 453010
Summit Co, Ohio



Ohio Historic Preservation Office

567 East Hudson Street
Columbus, Ohio 43211-1030
614/ 298-2000 Fax: 614/ 298-2037

Visit us at www.ohiohistory.org/resource/histpres/



**OHIO
HISTORICAL
SOCIETY**
SINCE 1885

January 6, 2003

CSX Transportation
Jacksonville General Office Bldg., 500 Water St.
Jacksonville, FL 32202

Dear Sir or Madam:

Congratulations on the recent listing of your property into the National Register of Historic Places!

The National Park Service, United States Department of the Interior listed the **Warwick Interlocking Tower** at 2955 South 1st Street in Clinton, Ohio, on December 12, 2002. The nomination was made in connection with a state plan to identify and document prehistoric and historic places in Ohio which qualify for National Register status under provisions of the National Historic Preservation Act of 1966 as amended.

The Ohio Historic Preservation Office (OHPO) is available to advise you in maintaining the historic character of your property. As you know from previous mailings received from this office, there are no restrictions placed on your property following the National Register listing. However, the OHPO strongly encourages owners of historic properties to consider all options before completing work that could damage the structure or impair its historic integrity. Careful planning can facilitate the sensitive incorporation of contemporary alterations with the historic fabric. The OHPO provides free information on how to sensitively rehabilitate and repair historic properties, upon request.

Thank you for your interest in historic preservation and the National Register of Historic Places.

Sincerely,

Barbara A. Powers
Department Head
Planning, Inventory, and Registration

Cc: Sam Tamburro, National Park Service, Form Preparer
Mayor Tom Mayberry, Village of Clinton
Senator Leigh E. Herington, District #28
Representative Mary Taylor, District #43
Akron Metropolitan Area Transportation Study
Paul Graham, Ohio Department of Transportation

Ohio Historic Preservation Office

National Register of Historic Places File Checklist

The following materials are contained in this file of the National Register form for:

Name: Warwick Interlocking Tower

County: Summit

Original National Register of Historic Places nomination form + an extra copy

Multiple Property Nomination form

Photograph(s)

Photograph(s) (copies)

USGS map(s)

USGS map(s) (^{photo}copies) (in nomination)

Sketch map(s)/figure(s)/exhibit(s)

Correspondence

Other _____
